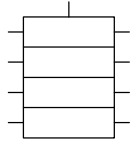
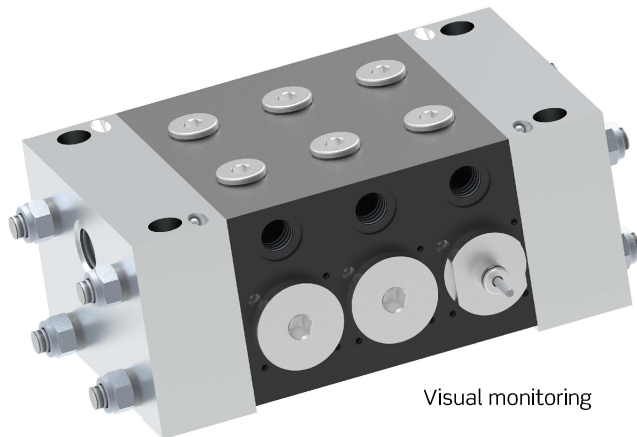


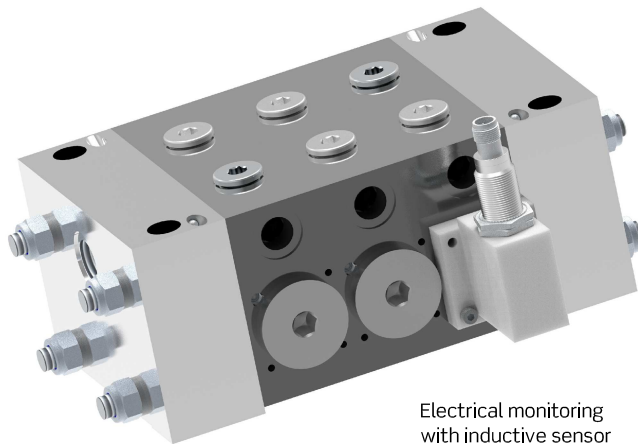
VP20/F



## Plate Progressive Distributor



Visual monitoring



Electrical monitoring  
with inductive sensor

### General aspects

Distributors from series VP20/F have been designed to be built on stacked plates and they are suitable for use in central lubrication systems with grease or oil.

They operate according to the progressive system dividing the lubricant delivered from the inlet to the outlets in relationship to the flow rate of each plate, which is directly proportional to the diameter of the internal piston: the greater the diameter the bigger the flow.

This ration can be increased by combining outlets (plugging, bridging, etc.)

At its simplest level the distributor consists of:

- 1 Initial plate with lubricant inlet hole.
- 3 Intermediate dosing plates.
- 1 Final plate.

The initial and final plates are common to all combinations. Intermediate plates vary according to flow and outlet combination.

All plates are attached to each other through two screw tie rods and the combinations are sealed with high resistance o-ring joints.

Options for monitoring:

- visual check
- electrical check with inductive sensor

### Technical data

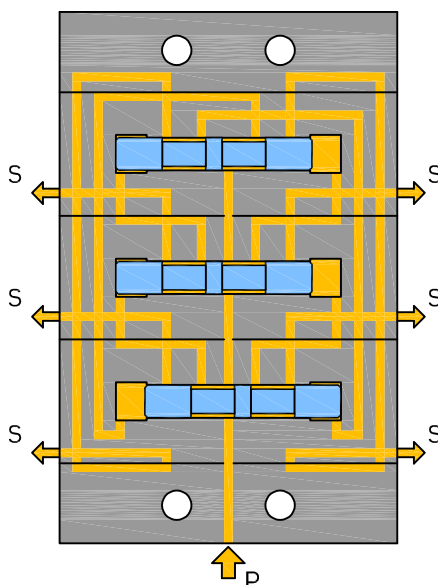
Output flow..... cm<sup>3</sup>/stroke

2	5	7,5	10
---	---	-----	----

Material..... steel with treated surface

Lubricants:

- Oil..... from 30 cSt
- Grease..... up to NLGI 2
- Working pressure..... 25÷200 bar
- Working temperature..... -15°C÷ + 100°C
- Maximum N° plates..... 10
- Maximum inlet flow..... 16 litres/minute



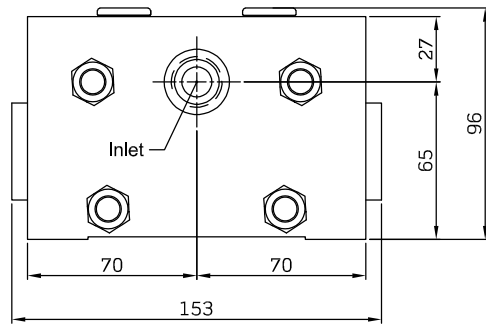
### Working cycle

The cycle starts with the pressure delivery to P. Each outlet gives the volume corresponding to the piston of its own dosing plate.

A cycle is complete when all the pistons have made their way to both sides and returning to the initial position, being ready for a next cycle.

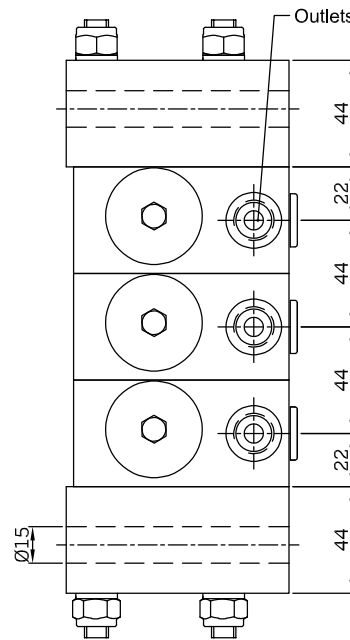
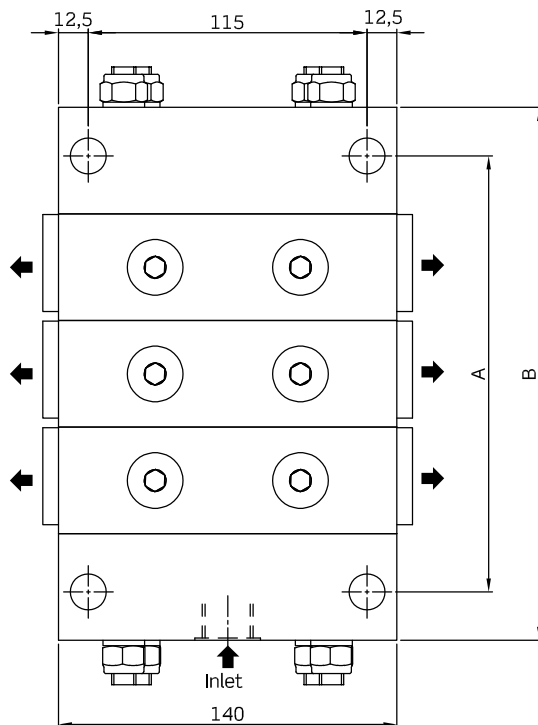
Dimensions

VP20/F



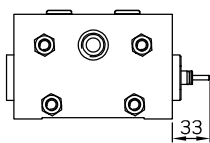
N° of plates	A	B
3	180	220
4	224	264
5	268	308
6	312	352
7	356	396
8	400	440
9	444	484
10	488	528

Connections	Inlet	Outlets
	G1/2	G3/8



Monitoring Systems

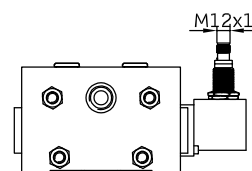
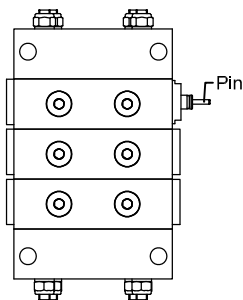
Can be mounted on all dosing plates that you require



Visual monitoring

The movement of a pin connected to the internal piston, externalises the movements and enables to visually control the correct operation of the whole installation.

Important: the visual control is not an after-sales supply element, it must be incorporated in-house at source.

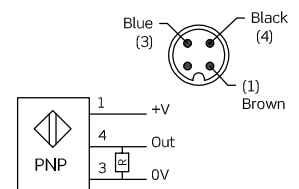
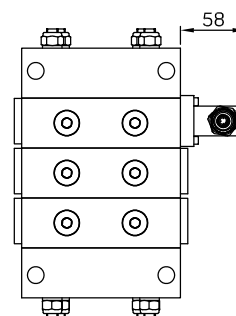


Electrical monitoring with inductive sensor

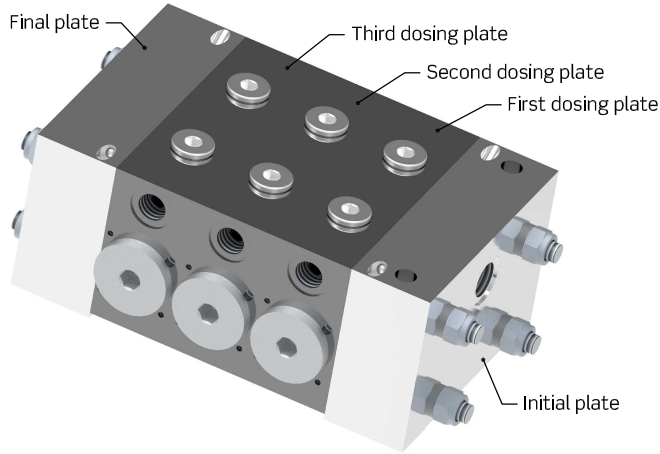
It consists of an anodized aluminium body that incorporates an inductive sensor and detects the motion of a pin connected to the internal piston opening and closing the contact.

Voltage / Function...10 ÷ 30V / NO  
Max. load admitted..... 200 mA  
Protection.....IP65  
Temperature.....-10°C ÷ +70°C  
Connection...connector M12 4 poles

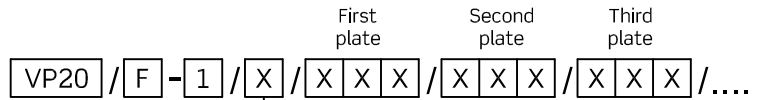
The inductive sensor is supplied without connector: it needs to be ordered separately



**VP20/F**  
Plate Progressive Distributor



The distributor must contain at least 3 dosing plates  
First dosing plate is the one next to the initial plate  
with the pressure inlet



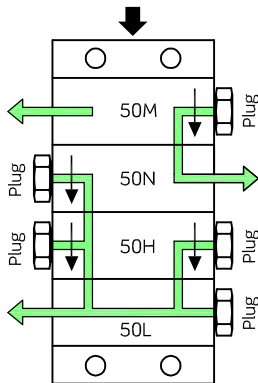
**Outlets combination by internal bridges**

Elements M - N - H - P - Q

Depending on the required outlet combination this distributor can be supplied at source with in-house internal bridges (internal connection holes).

This combination system is not modifiable.

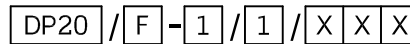
The last dosing plate cannot be bridged.



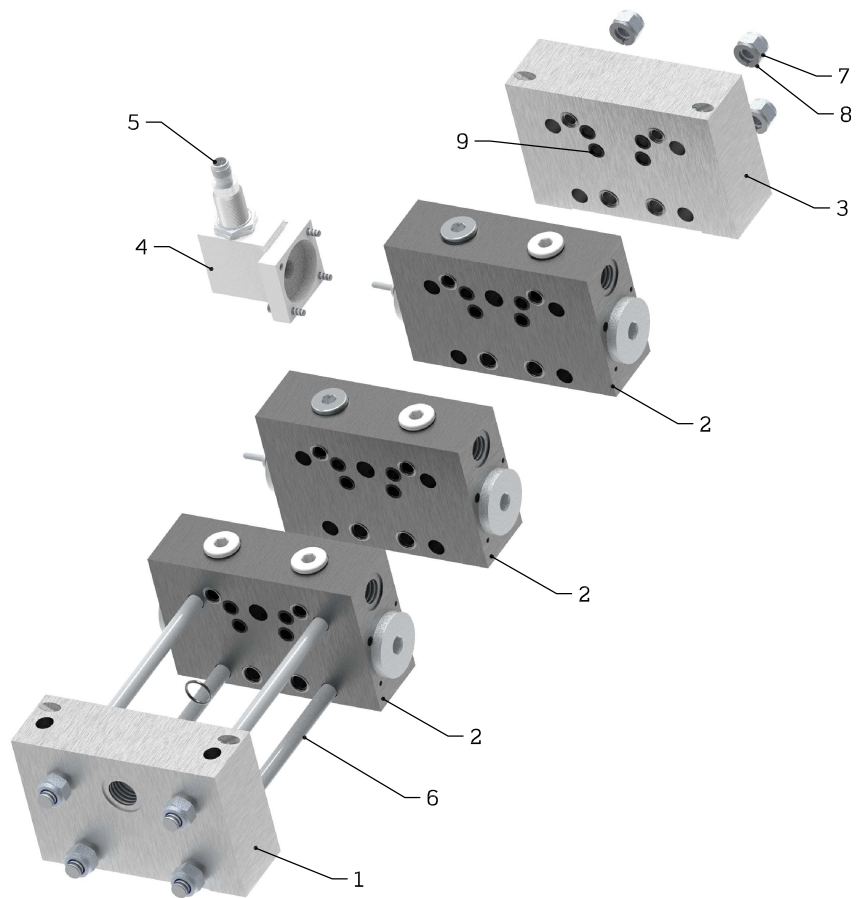
Ordering example for the distributor of the upper figure:  
VP20/F-1/4-50M/50N/50H/50L

N° of plates	Flow cm3/str.	X	Outlet combination		X	Monitoring system		X
			Diagram	Code		System	Code	
3 ... 10	2	2	2 outlets		T	Without	-	
	5	5	Right side outlet		S	Visual left side	1	
	7,5	7	Left side outlet		L	Visual right side	2	
	10	10	Left side outlet Bridge on right side		M	Inductive sensor left side	5	
			Right side outlet Bridge on left side		N			
				Bridges on both sides		H	Inductive sensor right side	6
				Bridge on right side		P		
				Bridge on left side		Q		

Intermediate dosing plates



## VP20/F Spare parts



Pos.	Description	Reference
1	Initial plate	320 010 000
2	Intermediate dosing plates	DP20/F... (ver pag.3)
3	Final plate	320 020 000
4	Bracket box for inductive sensor	703 116 451
5	Spare inductive sensor M18 for connector M12	913 902 101
6	Tie rods (4 units for each distributor)	
	distributor of 3 intermediate dosing plates	703 111 455
	distributor of 4 intermediate dosing plates	703 112 455
	distributor of 5 intermediate dosing plates	703 113 455
	distributor of 6 intermediate dosing plates	703 114 455
	distributor of 7 intermediate dosing plates	703 115 455
	distributor of 8 intermediate dosing plates	703 117 455
	distributor of 9 intermediate dosing plates	703 118 455
	distributor of 10 intermediate dosing plates	703 119 455
7	Self-locking nut (8 units for each distributor)	800 985 010
8	Washer (8 units for each distributor)	800 127 010
9	Intermediate O-rings	
	OR-14-1,78 (1 unit for each plate)	915 200 176V
	OR-10,82-1,78 (2 units for each plate)	915 200 130V
	OR-9,25-1,78 (2 units for each plate)	915 200 105V
	OR-7,65-1,78 (4 units for each plate)	915 200 075V